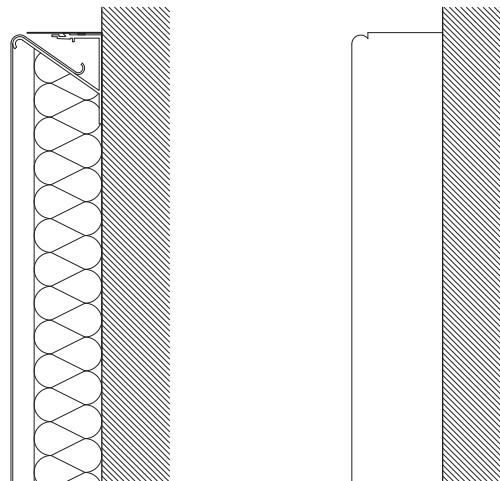
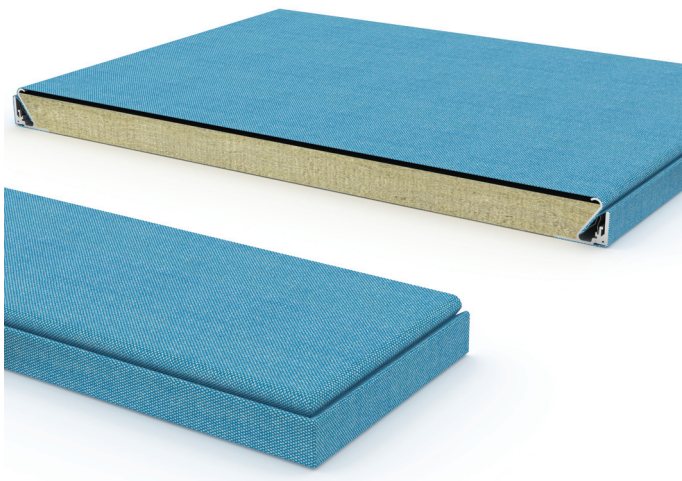


# Soft Cells Alu Tracks

version 2022.01.18



## About

Soft Cells Alu Tracks is a site-fabricated acoustical wall system, that stretch textile over semi-rigid acoustic padding to control sound.

Depending on configuration, typically this version offers Class-A to Class C sound absorption, as per ISO 11654.

Particularly well suited to:

Spaces with severe to moderate need for sound absorption

Spaces with large free wall surfaces.

Late changes as the tracks are built on-site.

## Applications

Interior walls

## Structural form

Single-sided, single-layer tensioned textile mounted in aluminium-track directly on wall substrate over mineral-based acoustic core.

## Dimensions

Customised in any size with textile width and length as standard limitation

## System depth

Wall-mounted version: 25 or 50 mm from installation surface (wall substrate).

## Frame profile

Aluminum hollow section profile, height: 25 and 50 mm Colour: Grey, anodized.

## Mounting system

Soft Cells Alu Tracks are screwed or nailed to and built directly on wall substrate as e.g. gypsum boards.

## Textiles

A standard set of textiles have been tested for sound absorption according to ISO 11654/EN ISO 354. Additional textiles can be tested for acoustic performance upon request

## Acoustic core

22 or 38 mm mineral based absorber behind a front textile membrane.

## Fire performance

Kvadrat Soft Cells come with a range of fire tests classifications and certificates included as standard for several international markets (Europe, USA, China, Middle East, etc.). Due to the many different possible configurations of Soft Cells and varying fire regulations in different markets, the standard coverage can vary for your particular product choice and setting.

For further details please see Kvadrat Soft Cells fire performance, test certificates and services-document.

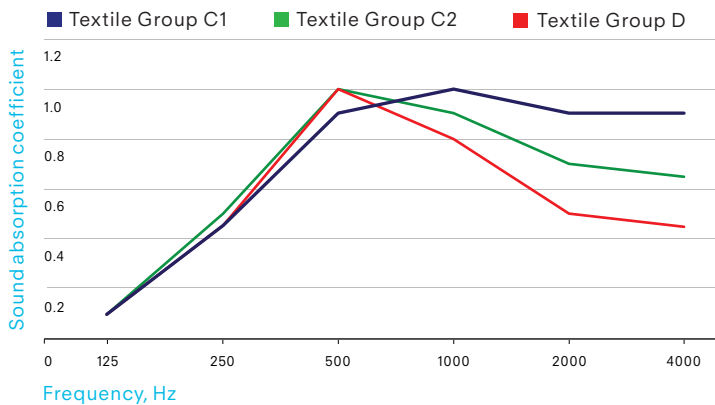
# Acoustic performance

Acoustic results for specific textiles can be supplied upon request, or downloaded from soft-cells.com.

See performance for different textiles groups below:

## Slim Installation

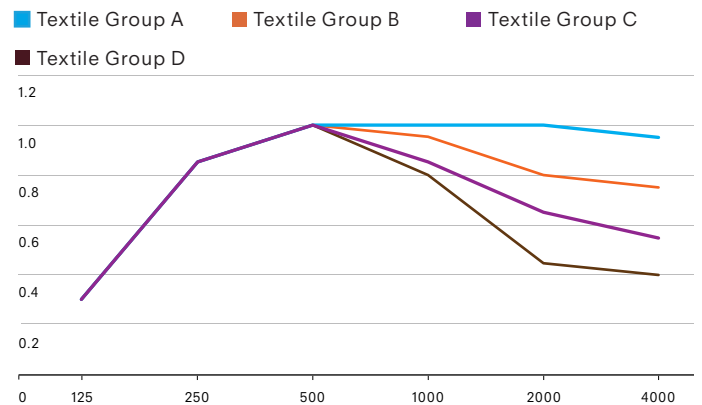
Soft Cells Alu Tracks installed directly on wall substrate. Depth 25 mm (ISO-354) with different front textiles



Textile group	Acoustic Class	$\alpha$	EN Fire Class
C1	C	0,75 (MH)	-
Ex: Casa* / Field 2* / Pro 3* / Time 300*			B-s2,d0
C2	C	0,75 (M)	-
Ex: Toto SC* / Matrix* / Parkland*			B-s2,d0
D	D	0,55 (MM)	-
Ex: Avalon*			B-s2,d0

## Best absorption

Soft Cells Alu Tracks installed directly on wall substrate. Depth 50 mm (ISO-354) with different front textiles



Textile group	Acoustic Class	$\alpha$	EN Fire Class
A	A	1	-
Ex: Casa* / Casita* / Mi casa* / Time 300*			B-s2,d0
B	B	0,85	-
Ex: Toto SC* / Memory 2 / Parkland / Star 2			B-s2,d0
C	C	0,70 (LM)	-
Ex: Matrix*			B-s2,d0
D	D	0,50 (LMM)	-
Ex: Avalon*			B-s2,d0

\* Specific colours of textile examples should be checked for transparency issues before ordering