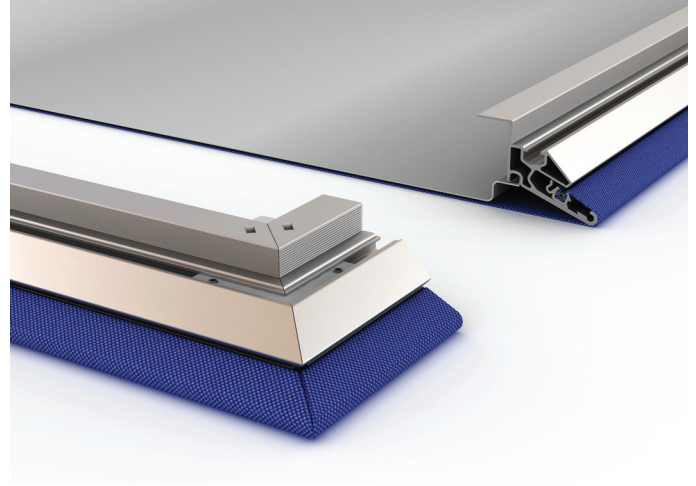


# Soft Cells Reflective

version 2021.07.13



## About

Soft Cells Reflective panels incorporate a reflective plate behind a textile layer. Typically, this model offers Class-E sound absorption (high reflection), as per ISO 11654.

Particularly well suited to:

Enhanced natural speech transfer/clarity through sound reflection

Advanced passive acoustic design and sound control - especially in combination with other Soft Cells models.

Combining reflective acoustic properties with the soft and tactile textile surface choices of Soft Cells.

## Applications

Interior walls and ceilings

## Structural form

Single-sided, single-layer tensioned textile frame with a 1 mm thick steel reflective back plate

## Dimensions

Customised as standard from 200 × 200 mm to 1500 × 3000 mm, depending on choice of textile (textile width – 200 mm = maximum panel width).

## System depth

Wall-mounted version: 55 mm from installation surface

Ceiling-mounted version with flex magnet or hinge/push-latch: 55 mm from installation surface

Ceiling-mounted version with steel wire: min. 110 mm/max. 1600 mm

## Frame

Aluminium hollow section profile, height: 49 mm  
Colour: silver anodised

## Mounting system

Walls: magnets and flex magnet(combined) or hinge/push-latch

Ceilings: flex magnet or hinge/push-latch or steel wire

## Textiles

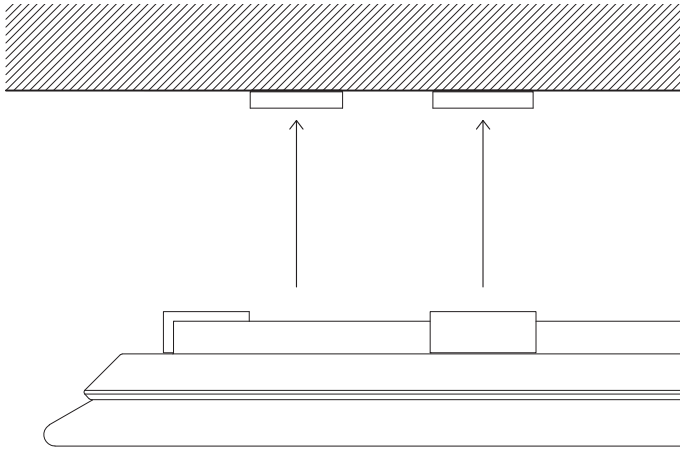
A standard set of textiles have been tested for sound absorption according to ISO 11654/EN ISO 354. Additional textiles can be tested for acoustic performance upon request

## Acoustic core

1 mm steel plate reflector incorporated 1.5 mm air space behind front textile

# Accessories

## Flex magnet suspension

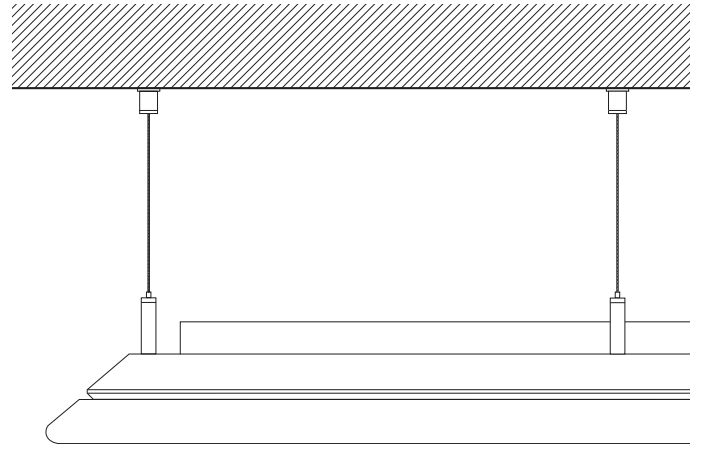


Allow for the dismantling of panels without tools.  
Suitable for mounting on walls  
Concealed/hidden solution.

Material: pot magnet, steel, aluminium

Overall depth of the panels from the face of the installation surface: 55 mm

## Steel wire suspension

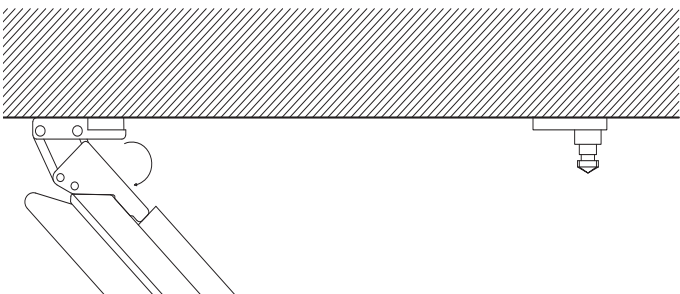
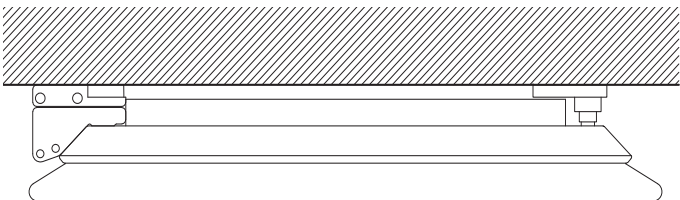


For ceiling mounting where a suspended ceiling is required.

Material: stainless steel wire

Adjustable distance from the front side of the panel to the installation surface: range: 110-1600 mm

## Hinge/push latch suspension

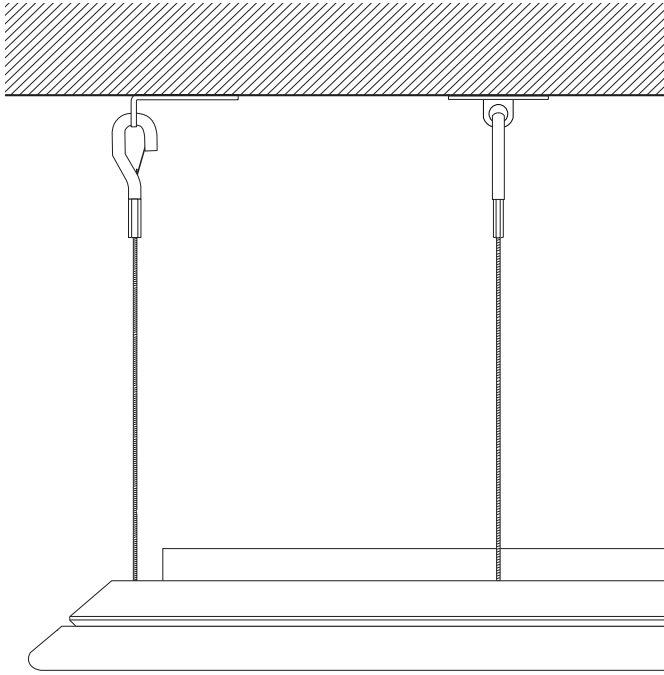


If subsequent access is required behind the panel, Soft Cells should in ceilings be mounted with hinge/push latch.

Material: steel

Dimensions from the front side of the Soft Cells to the installation brackets: 55 mm

## Safety wire



All suspension systems include safety wires if panels are installed in ceilings or on walls more than 3000 mm above floor level. (optional for wire suspension).

## Fire performance

Kvadrat Soft Cells come with a range of fire tests classifications and certificates included as standard for several international markets (Europe, USA, China, Middle East, etc.). Due to the many different possible configurations of Soft Cells and varying fire regulations in different markets, the standard coverage can vary for your particular product choice and setting.

For further details please see Kvadrat Soft Cells fire performance, test certificates and services document.

## CE-marking

Kvadrat Soft Cells comply with the EU-harmonised product standard for suspended ceilings (EN-13964)

For further details please refer to [softcells.com](http://softcells.com)

## Printed SC

SC with print is available on Primus 1100 and Toto 1102 as a front textile.

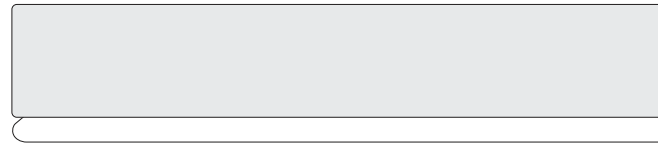
Printed textiles are EN-fire tested B,s1-d0 and yields acoustic class A on Broadline.

Printed SC size limits are:

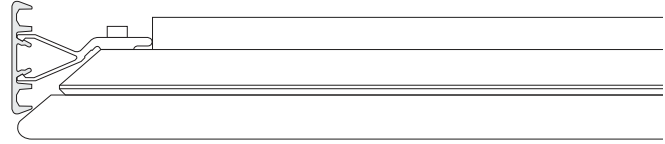
Max length of 3000 mm

Max width of 1500 mm.

## End caps / closed edge



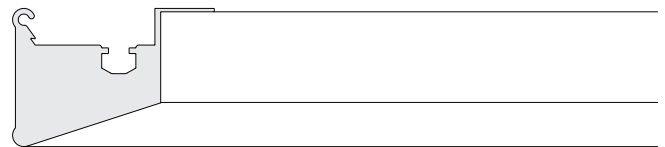
Front view End cap profile



Side view End cap profile



Front view Closed edge profile



Section view Closed edge profile

For covering the small gap between wall and Soft Cells

Material: aluminium

Width of end cap: 45 mm, length adjusted to length or width of Soft Cells, max. 6000 mm in one piece  
Can be either anodised surface or upholstered with the same textiles as the Soft Cells panels

For closed edge solution the front textile is upholstered over the closed edge to the back of the panel as an integrated solution (box)

## Environmental labelling

Kvadrat Soft Cells carry general environmental product declaration (EPD) according to international standards. This information feed into all major environmental building certification schemes like DGNB, LEED, BREEAM, HQE and others used worldwide.

Furthermore, Kvadrat Soft Cells are designed for disassembly.

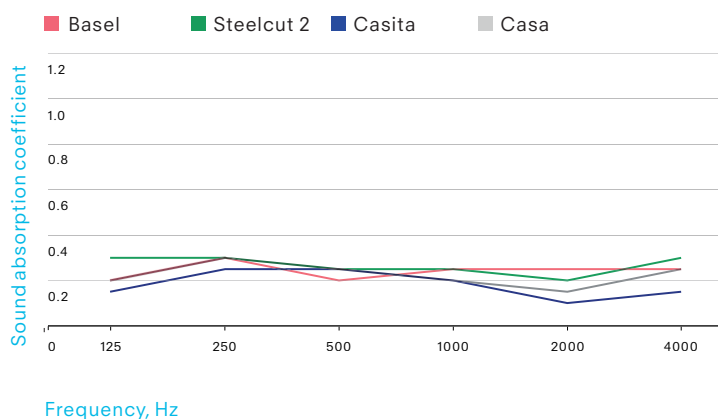
# Acoustic performance

Acoustic results for specific textiles can be supplied upon request, or downloaded from soft-cells.com.

See indicative examples in figures below:

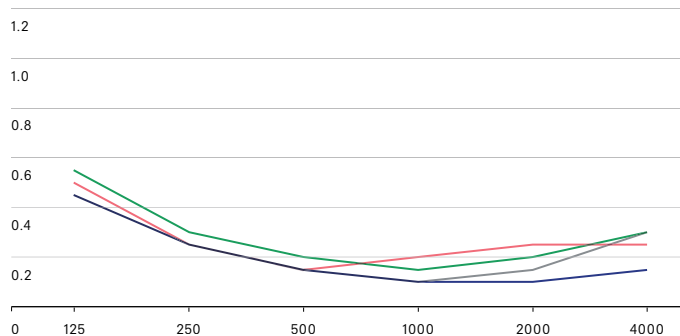
## Wall Use

Wall and ceiling absorbers installed with magnets, 55 mm depth (ISO-354) with different front textiles



## Ceiling Use

Suspended ceiling absorbers, 200 mm depth (ISO-354) with different front textiles



Textile example	Acoustic Class	$\alpha$	EN Fire Class
Basel	E	0,25 (L)	No class
Steelcut 2	E	0,25 (L)	No class
Casita	E	0,20 (L)	B-s1,d0
Casa	E	0,20 (L)	B-s1,d0

Textile example	Acoustic Class	$\alpha$	EN Fire Class
Basel	E	0,20 (L)	No class
Steelcut 2	E	0,20 (L)	No class
Casita	E	0,15 (L)	B-s1,d0
Casa	E	0,15 (LH)	B-s1,d0