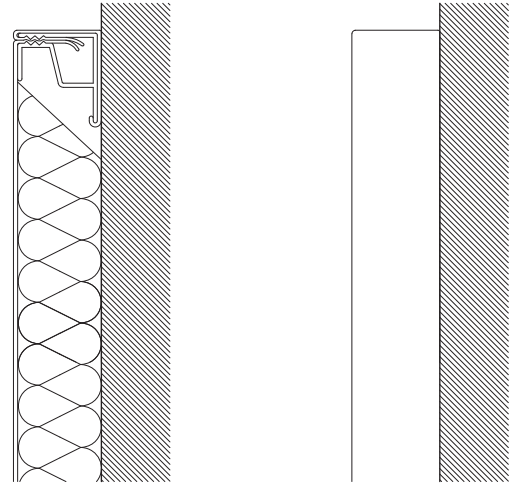
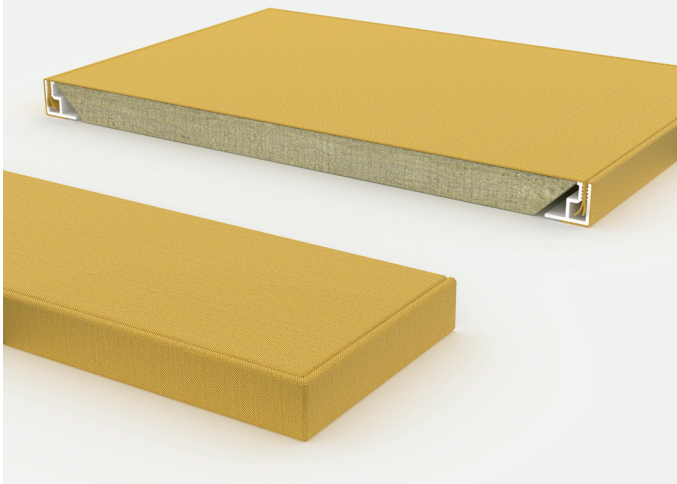


Soft Cells Tracks

version 2021.03.26



About

Soft Cells Tracks is a site-fabricated acoustical wall system, that stretch textile over semi-rigid acoustic padding to control sound. The design allows for free-form curves, decorative reveals or three-dimensional surfaces.

Depending on configuration, typically this version offers Class-A to Class C sound absorption, as per ISO 11654.

Particularly well suited to:

Spaces with severe to moderate need for sound absorption

Spaces with large free wall surfaces.

Complex visual design layout and late changes as the tracks are built on-site.

Applications

Interior walls

Structural form

Single-sided, single-layer tensioned textile mounted in PVC-track directly on wall substrate over mineral-based acoustic core.

Dimensions

Customised in any size with textile width and length as standard limitation

System depth

Wall-mounted version: 25 or 50 mm from installation surface (wall substrate).

Frame profile

PVC hollow section profile, height: 25 and 50 mm
Colour: white or covered with textile.

Mounting system

Soft Cells Tracks are stapled to and built directly on wall substrate as e.g. gypsum boards.

Textiles

A standard set of textiles have been tested for sound absorption according to ISO 11654/EN ISO 354. Additional textiles can be tested for acoustic performance upon request

Acoustic core

24 or 49 mm mineral based absorber behind a front textile membrane.

Fire performance

Kvadrat Soft Cells come with a range of fire tests classifications and certificates included as standard for several international markets (Europe, USA, China, Middle East, etc.). Due to the many different possible configurations of Soft Cells and varying fire regulations in different markets, the standard coverage can vary for your particular product choice and setting.

For further details please see Kvadrat Soft Cells fire performance, test certificates and services-document.

For further details please refer to softcells.com

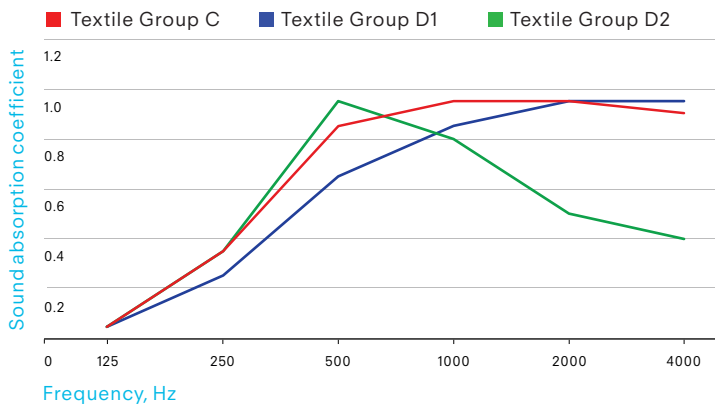
Acoustic performance

Acoustic results for specific textiles can be supplied upon request, or downloaded from soft-cells.com.

See performance for different textiles groups below:

Slim Installation

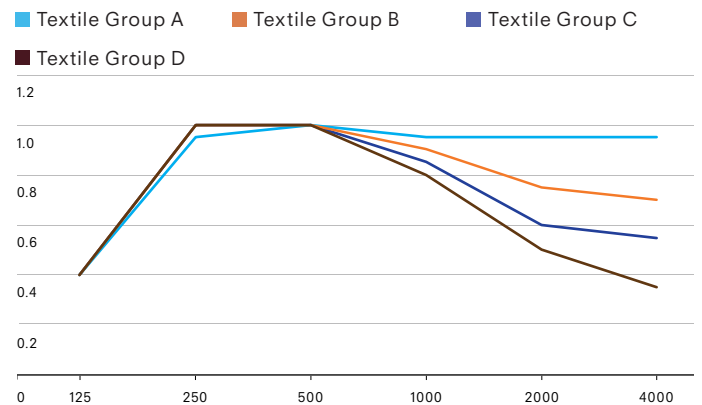
Soft Cells Tracks installed directly on wall substrate. Depth 25 mm (ISO-354) with different front textiles



Textile group	Acoustic Class	α	EN Fire Class
C	C	0,65 (MHH)	-
Ex: Casa* / Field 2* / Pro 3* / Time 300*			C-s2,d0
D1	D	0,55 (MHH)	-
Ex: Casita* / Ginger 2* / Mi casa*			C-s2,d0
D2	D	0,55 (MM)	-

Best absorption

Soft Cells Tracks installed directly on wall substrate. Depth 50 mm (ISO-354) with different front textiles



Textile group	Acoustic Class	α	EN Fire Class
A	A	1	-
Ex: Casa* / Casita* / Mi casa* / Time 300*			B-s2,d0
B	B	0,8 (L)	-
Ex: Toto SC*			B-s2,d0
C	C	0,65 (LM)	-
Ex: Plot*			B-s2,d0
D	D	0,5 (LMM)	-

* Specific colours of textile examples should be checked for transparency issues before ordering